

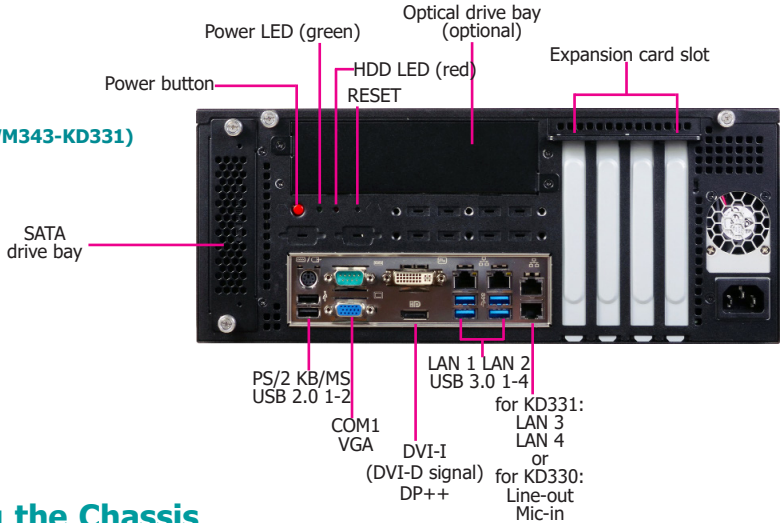
Package Contents

- One WM343-KD330/WM343-KD331 system unit
- Screw pack and SATA cable for SATA drive installation
- 1 CPU cooler and 1 system fan
- HDD mounting screws



Panel

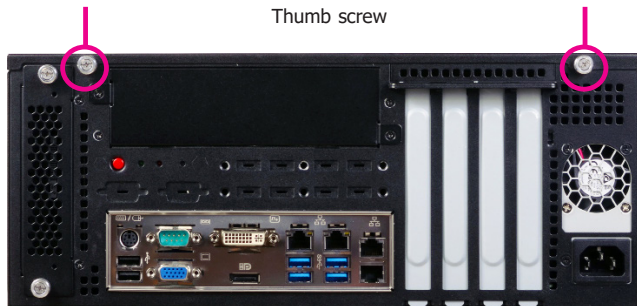
Rear View
(WM343-KD330/WM343-KD331)



Opening the Chassis

Please observe the following guidelines and follow the procedure to open the system.

1. Make sure the system and all other peripheral devices connected to it have been powered off.
2. Disconnect all power cords and cables.
3. Remove the top cover by uninstalling the thumb screws.



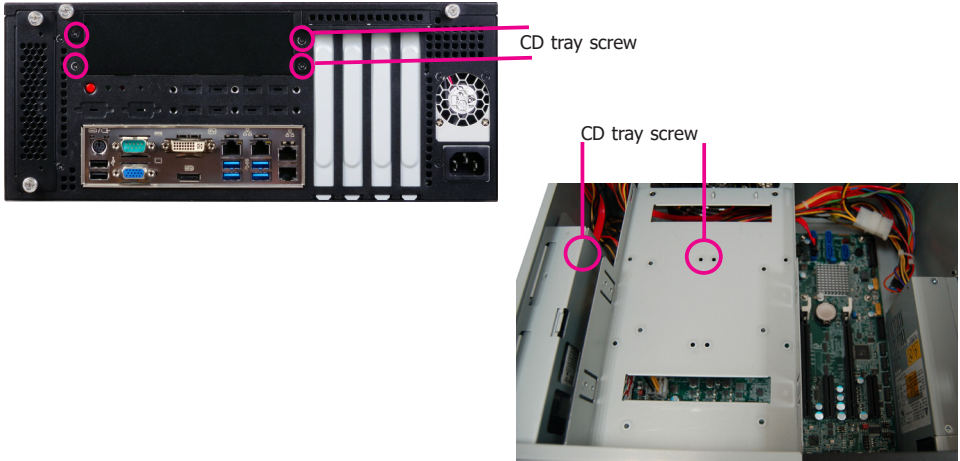
DFI reserves the right to change the specifications at any time prior to the product's release. This QIG may be based on editions that do not resemble your actual products. For the latest revision and more details of the installation procedure, please refer to go.dfi.com/WM343-KD330 and go.dfi.com/WM343-KD331 or scan the QR codes on the right.



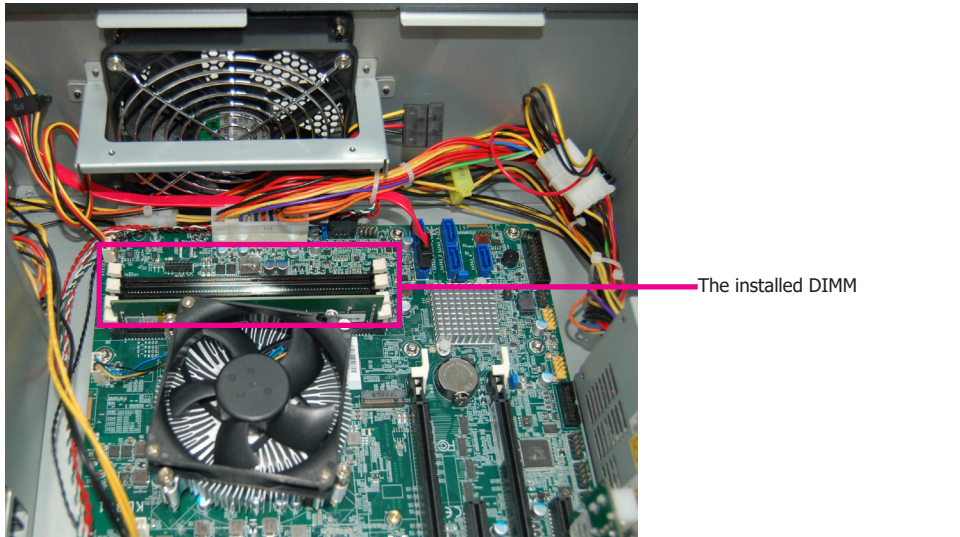


Installing a DIMM

To access the DIMM sockets, first remove the CD tray by uninstalling the screws from the rear panel and inside the chassis.



To install a DIMM, align the notch on the DIMM with the tab in the DIMM connector. Then press down on the DIMM until the release tabs spring back to secure the DIMM in place.



Notes:

1. The WM343-KD330 is equipped with two or four DDR4 (dual channel) sockets depending on the chipset.
2. The WM343-KD331 is equipped with four DDR4 (dual channel) sockets.



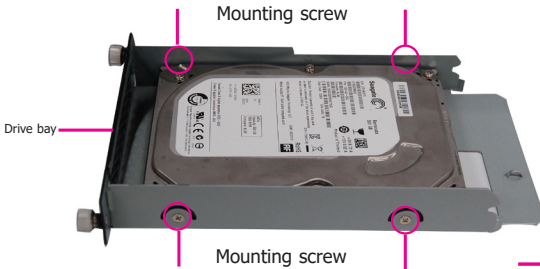
Installing a 3.5" or 2.5" SATA Drive

1. Remove the thumb screws that secure the HDD drive bay to the chassis and remove the drive bay.

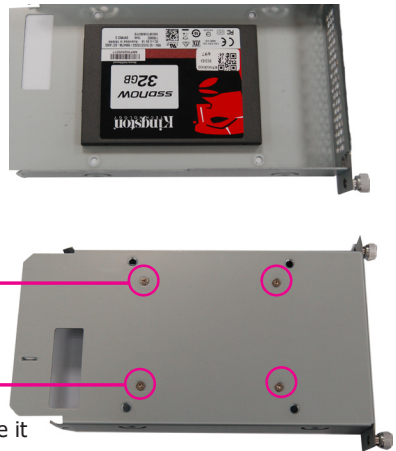


2. Secure the hard drive to the drive bay. Align the mounting holes on the SATA drive with the mounting holes on the HDD drive bay. Use 4 mounting screws to install the hard drive onto the HDD drive bay.

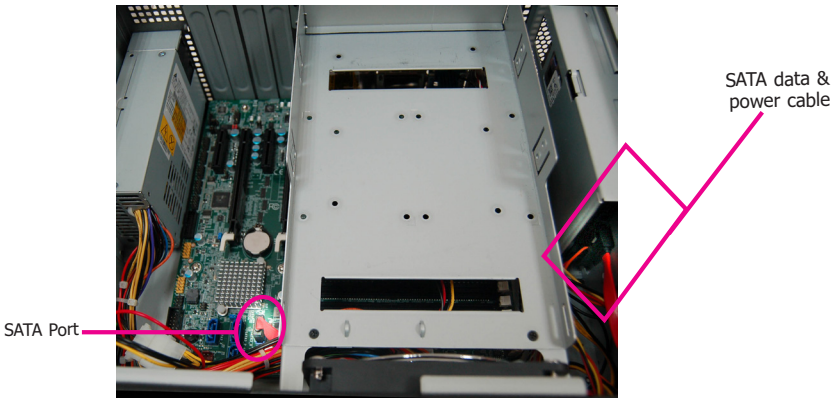
3.5" SATA Drive



2.5" SATA Drive



3. Slide the HDD drive bay back to the system and secure it with the thumb screws.
4. Connect the SATA data cable and power cable to the connectors on the SATA drive. And connect the other end of the SATA data cable on the motherboard.



Board Layout and Jumper Settings (WM343-KD330)

RS232/422/485	JP7 (COM 1) JP11 (COM 2)
RS232 (default)	1-2 On
RS422 Full Duplex	3-4 On
RS485	5-6 On

RS232/422/485	JP8/JP10 (COM 1) JP12/JP13 (COM 2)
RS232 (default)	1-3, 2-4 On
RS422 Full Duplex	3-5, 4-6 On
RS485	3-5, 4-6 On

RS232/Power	JP9 (COM 1) JP14 (COM 2)
RS232 (default)	1-3 (RI), 2-4 (DCD) On
RS232 with power	3-5 (+5V), 4-6 (+12V) On

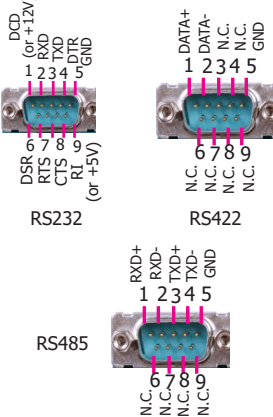
The following jumper settings are for WM343-KD330 (Intel® Q170 only).

Mini PCIe/mSATA Signal	JP6
Mini PCIe (default)	1-2 On
mSATA	2-3 On

WM343-KD331

Clear CMOS Data	JP1
Normal (default)	1-2 On
Clear CMOS Data	2-3 On

COM 1/COM 2: RS232 with power/422/485



Notes:

- When COM 1 RS232/422/485 is selected, JP8 and JP10 must be set in accordance to JP7.
- When COM 2 RS232/422/485 is selected, JP12 and JP13 must be set in accordance to JP11.

